

Der Arme Peter

Dikt of H. Heine
arranged by

~~Com. Lohner~~

~~1/2~~
~~1/2~~
~~1/2~~

Der arme Peter,

Handwritten musical score for 'Der arme Peter'. The score is written on three staves. The top staff is a vocal line in G major and 4/4 time, starting with a whole note G4. The middle staff is the right-hand piano accompaniment, and the bottom staff is the left-hand piano accompaniment. The piece features a melodic line with a fermata and a 'Ped' (pedal) marking. The lyrics 'booo ah' are written above the final notes of the vocal line.

Handwritten musical score for 'Der Hans und die Goetz tanzen'. The score is written on three staves. The top staff is a vocal line in G major and 4/4 time, starting with a whole note G4. The middle staff is the right-hand piano accompaniment, and the bottom staff is the left-hand piano accompaniment. The piece features a melodic line with a fermata and a 'Ped' (pedal) marking. The lyrics 'Der Hans und die Goetz tanzen' are written above the first few notes of the vocal line.

Handwritten musical score for 'Tanzen herum und jauchzen vor lauter Freude'. The score is written on three staves. The top staff is a vocal line in G major and 4/4 time, starting with a whole note G4. The middle staff is the right-hand piano accompaniment, and the bottom staff is the left-hand piano accompaniment. The piece features a melodic line with a fermata and a 'Ped' (pedal) marking. The lyrics 'Tanzen herum und jauchzen vor lauter Freude' are written above the first few notes of the vocal line.

Stukas Langsamme

meno rit

de Der Peter steht so still und stumm so still und stumm Und



Ritardando
ist so blass und ist so blass wie Knei - de

Ad libitum à tem



Fed

Der



14

von Hans die Gendeln Gmets sind Brautgamm und Braut Und hitzen im

The first system of the handwritten musical score consists of a vocal line on a single staff and a piano accompaniment on two staves. The vocal line begins with a treble clef and a key signature of one sharp (F#). The lyrics are written in cursive below the notes. The piano accompaniment features a rhythmic pattern of eighth notes in the right hand and chords in the left hand.

Hochzeit geschmeide Der Arme Peter die

The second system continues the musical score with a vocal line and piano accompaniment. The lyrics are written in cursive below the notes. The piano accompaniment maintains the rhythmic pattern established in the first system.

Kägel kann und geht im Herkel Tags kleide

The third system concludes the musical score on this page, featuring a vocal line and piano accompaniment. The lyrics are written in cursive below the notes. The piano accompaniment continues with the same rhythmic pattern.

Der Peter spricht leise vor sich

M
cantabile

her und schauet be-trübt auf Bei-de Ach wenn ich nicht gar

zu ver-müßlich war

Ich ~~...~~ "Seh mir was zu Peter

morendo

de

pp

The first system of the handwritten musical score consists of two staves. The upper staff is in treble clef and contains a series of notes, with a large blue slur spanning across it. The lower staff is in bass clef and contains a complex accompaniment of notes and rests. The word "morendo" is written in blue ink above the first measure of the upper staff. The letter "de" is written in blue ink above the first measure of the lower staff. The dynamic marking "pp" is written in blue ink above the first measure of the lower staff.

morendo

The second system of the handwritten musical score consists of two staves. The upper staff is in treble clef and contains a series of notes, with a large blue slur spanning across it. The lower staff is in bass clef and contains a complex accompaniment of notes and rests. The word "morendo" is written in blue ink above the first measure of the upper staff.

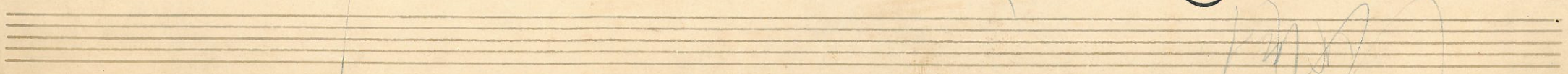
The third system of the handwritten musical score consists of two staves. The upper staff is in treble clef and contains a series of notes, with a large blue slur spanning across it. The lower staff is in bass clef and contains a complex accompaniment of notes and rests. The word "Fino" is written in blue ink at the end of the system.

In Erinnerung an die Brust da sitzt ein

Woh, *Das will die Brust zer-sprengen* *Und wo ich steh, ü wo ich*

geh, *Will's mich von hin-ne drau-gen.* *Es treibt mich nach der*

accelerando



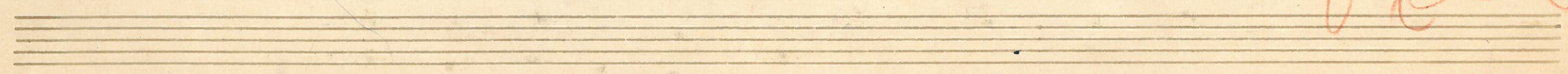
fis *Ritardando*
Lieb-^{ste}n Näh', Als kommst die Grotte hei-^{er} Doch wenn ich Der ins



Au-ge seh', Muss ich von himmen et-^{er} Ich steig' hin auf des Berges



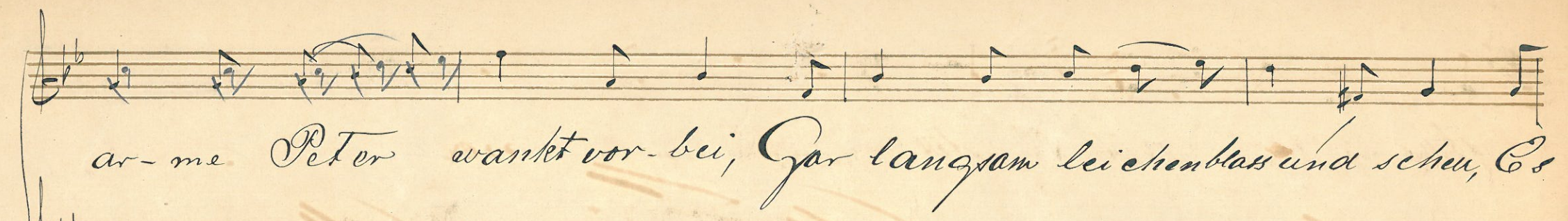
And. *And.*
Dort ist man doch al-^{lei} ne; Und wenn ich stü dorr



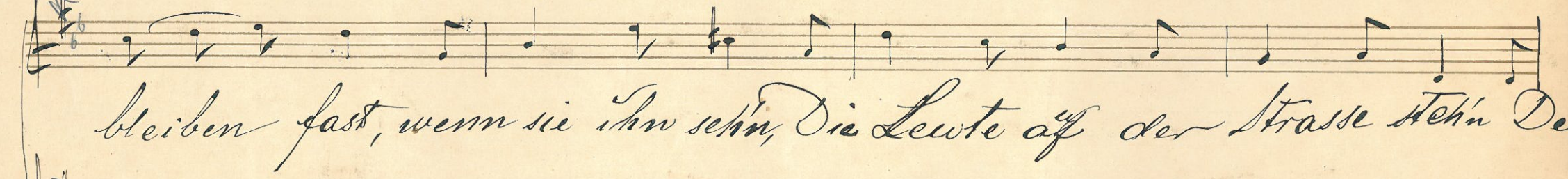
Handwritten musical score for the first system. The top staff is a vocal line in G major, 4/4 time, with lyrics: "Ist die Dame die ich lieb und mein ~~weib~~". The piano accompaniment consists of two staves with arpeggiated chords and melodic lines. The paper shows signs of age and staining.

Two empty musical staves. In the center, there is a handwritten number "3" above the word "mi".

Handwritten musical score for the second system. The top staff is a vocal line in G major, 4/4 time, with the word "Der" written below it. The piano accompaniment consists of two staves with arpeggiated chords and melodic lines. The paper shows signs of age and staining.



ar-me Peter wanket vor-bei, Gar langsam leichenblas und schen, Es



bleiben fast, wenn sie ihn seh'n, Die Leute auf der Strasse stehn Die



Mädchen flüster'n sich ins Ohr



The first system of the manuscript features a vocal line on a single staff with a treble clef and a key signature of two flats. The melody begins with a quarter note G4, followed by quarter notes A4, Bb4, and C5, then a half note Bb4. The piano accompaniment consists of two staves: the right hand plays a series of chords in the right hand, and the left hand plays a simple bass line. The key signature is two flats, and the time signature is not explicitly shown but appears to be common time.

stieg wohl aus dem Grabe hervor

The piano accompaniment for the first system is written for two staves. The right hand part features a series of chords, primarily triads and dyads, with some sixteenth-note patterns. The left hand part provides a steady bass line with quarter and eighth notes. The key signature remains two flats.

The second system continues the vocal line and piano accompaniment. The vocal line has a similar melodic structure to the first system. The piano accompaniment continues with chords and a bass line.

Ach nein, ihr lieben Jungfräulein, Ach

The piano accompaniment for the second system continues with chords and a bass line, supporting the vocal melody.

The third system shows the vocal line and piano accompaniment. The vocal line has some rests, and the piano accompaniment continues with chords and a bass line.

nein, ach nein ihr lieben Jun- frau

The piano accompaniment for the third system concludes with chords and a bass line, ending with a long note in the left hand.

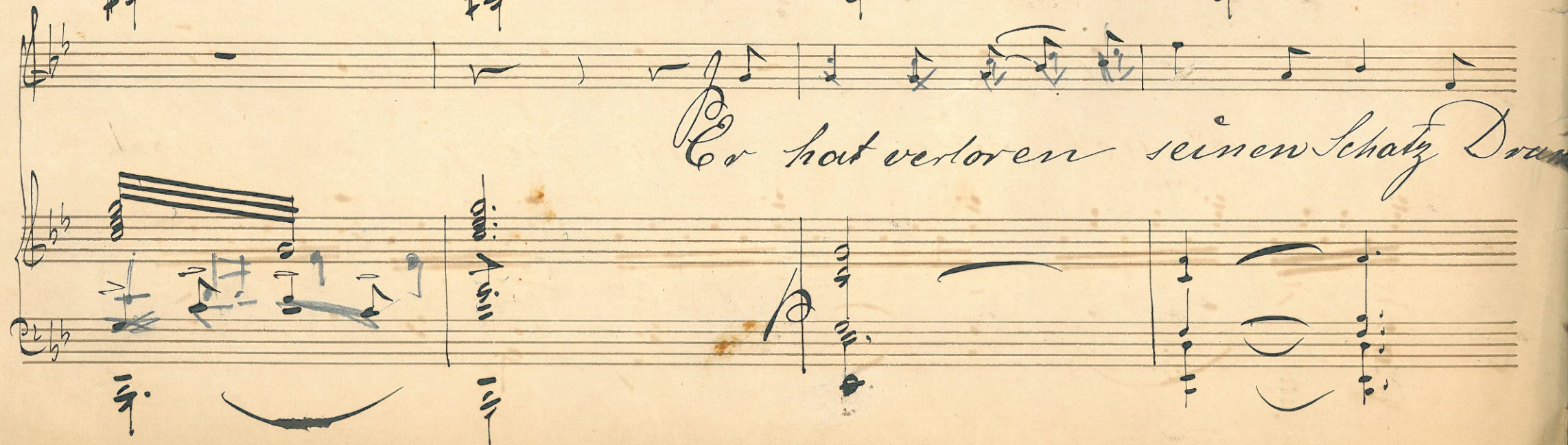
2. sein Der Der legt sich erst in's Grab hinein, ins

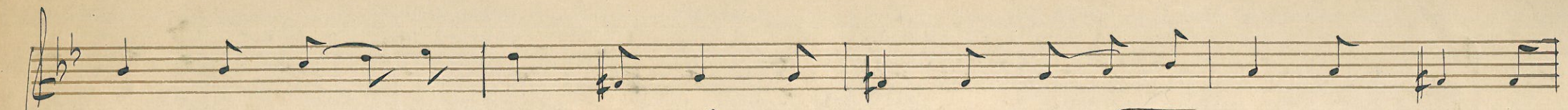


Grab hin-ein



Er hat verloren seinen Schatz Drum

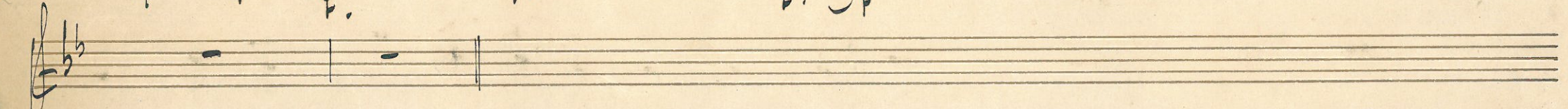
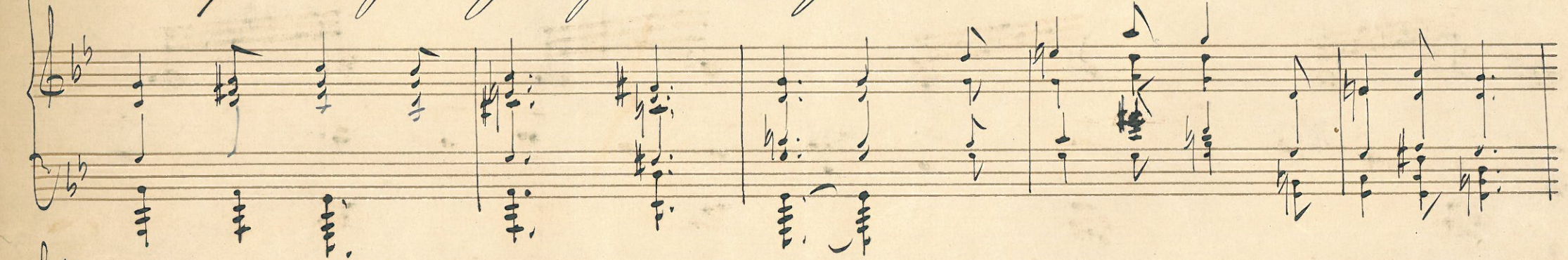




ist dass grad der beste Platz wo er am besten liegen mag und



schlafen bis zum jüngsten Tag



Stockholm den 9 Septem 1875