

Basso



JACOB STRUVE

1767-1826

Stråkkvintett E-dur

String Quintet in E Major

Stråkkvintett E-dur

I.

Jacob Bernhard Struve
(1767-1826)

Largo

p

9

f

22

f

30

p

36

pp

Allegro

42

f

53

f

61

68

80

pizz.

p

89



97



107



117



126



132



138



144



151



155



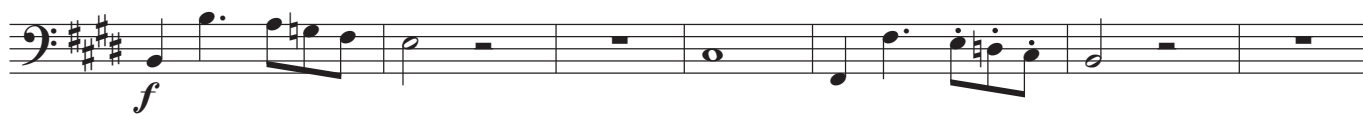
158



162



171



178



184



190



198



211



219



224



230



238



247



253



259



264



274



282



290



295



301



II.

Menuetto

10

18

27

36

49

57

64

74

82

f *sf* *p*

p *f* *sf*

sf

pp

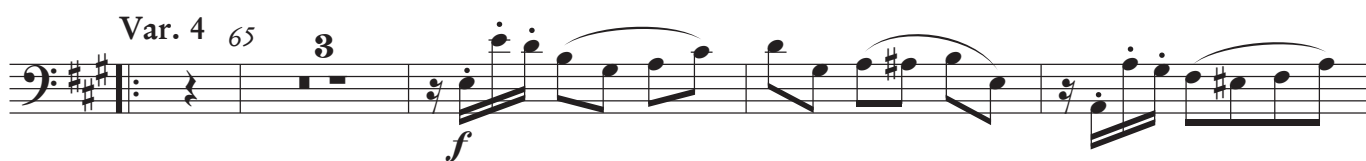
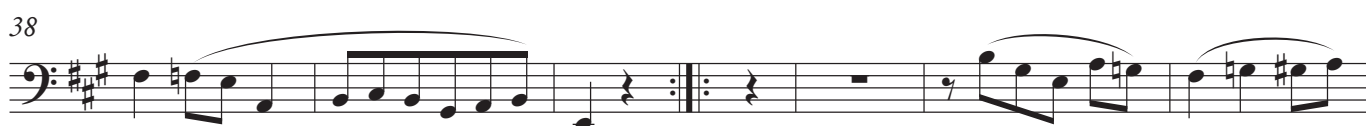
f *p*

Trio

Menuetto D.C.

III.

Andante poco Adagio



92



102



110



191

f

The bass line is written on a single staff with a bass clef and a key signature of one sharp (F#). It begins with a series of eighth notes: F#2, G2, A2, B2, C3, D3, E3, and F#3. This is followed by a series of quarter notes: G3, A3, B3, C4, D4, E4, F#4, and G4. The line ends with a *cresc.* marking.

[illegible]

The bass line of 'The Rose Tree' is written in G major (one sharp) and 2/4 time. It begins with a quarter rest, followed by a quarter note G2. A half note G2 is tied to the next measure, which contains a half note F#2. The melody continues with a quarter note E2, a quarter note D2, and a quarter note C2. A half note B1 is tied to the next measure, which contains a half note A1. The melody concludes with a quarter note G1, a quarter note F#1, and a quarter note E1. The key signature is one sharp (F#), and the time signature is 2/4. The melody is written in a single staff with a treble clef. The notes are G2, F#2, E2, D2, C2, B1, A1, and G1. The melody is written in a single staff with a treble clef. The notes are G2, F#2, E2, D2, C2, B1, A1, and G1.

Musical notation for the bass line of "The Rose Tree" in G major. The key signature has three sharps (F#, C#, G#). The melody starts on G2, moves to A2, B2, and C3, then has a whole rest. It then continues with a series of eighth and sixteenth notes, including triplets, and ends with a quarter note G2. Dynamics *f* and *p* are indicated.

[illegible]

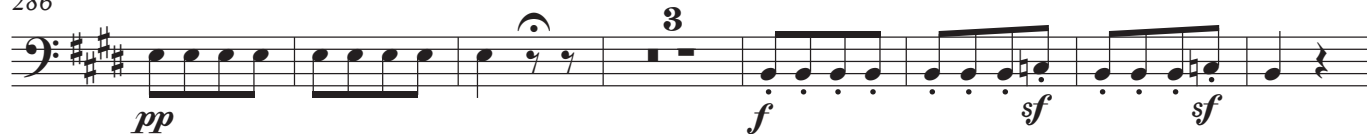
271



279



286



296



308



315



321



329

