

Viola

Ouverture för stor orkester

till W. Shakespeares *Antonius och Cleopatra*

Ludvig Norman
(1831–1885)

Allegro marziale e maestoso $\text{♩} = 60$

6

16

20

24

35

44

ff *sf* *sf* *tr* *sf* *pp* *p* *mf* *f* *ff* *sf* *sf* *mf* *diminuendo* *p* *pp* *con sord.* *Andantino grazioso* $\text{♩} = 56$ *A* *7*

58 senza sord. **Tempo I**

f *ff*

63 *sf*

68 *sf* **B** *fz*

75 **Allegro ma non troppo presto** $\text{♩} = 88$

fz *p*

83 *cresc.*

91 **C** *ff* **D** *ff*

99

105 *sf* *sf* *ff*

111 *sf*

116 *sf*

122 *sempre ff*

127 **Un poco più tranquillo**

p

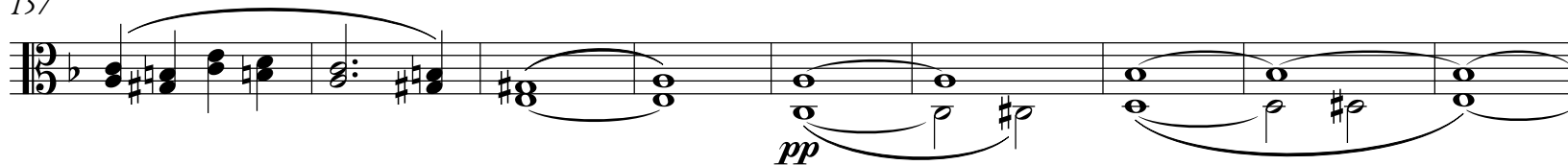
136



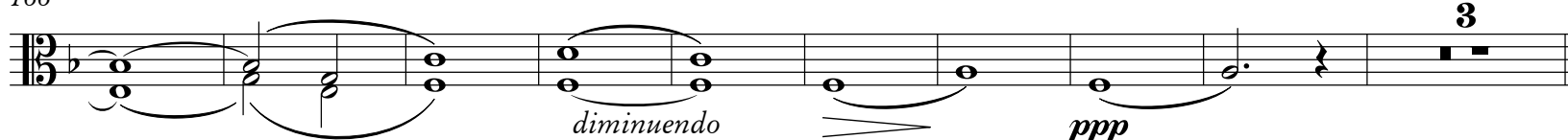
146



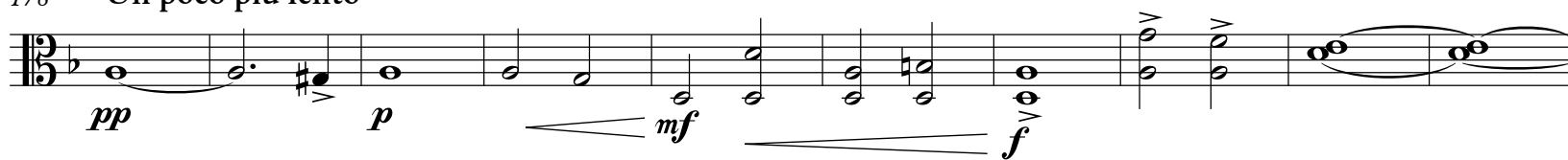
157



166

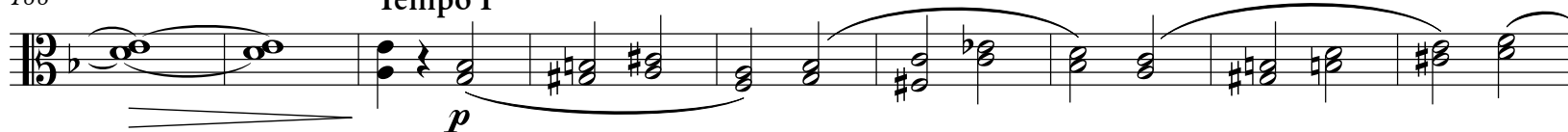


178 Un poco più lento

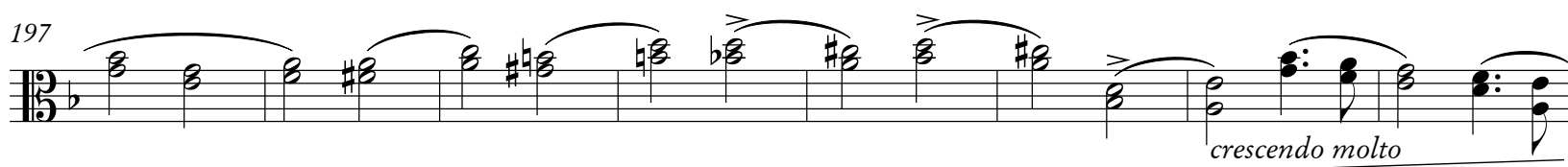


188

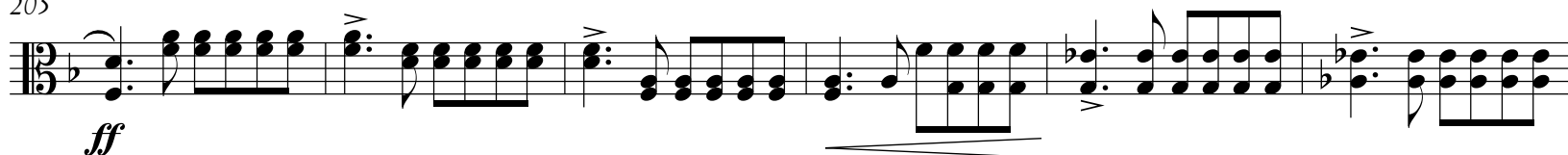
Tempo I



197



205



211



217



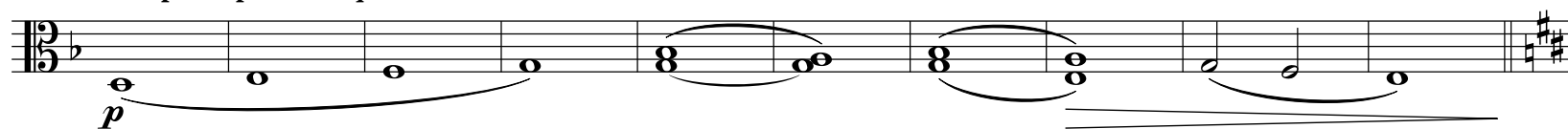
222



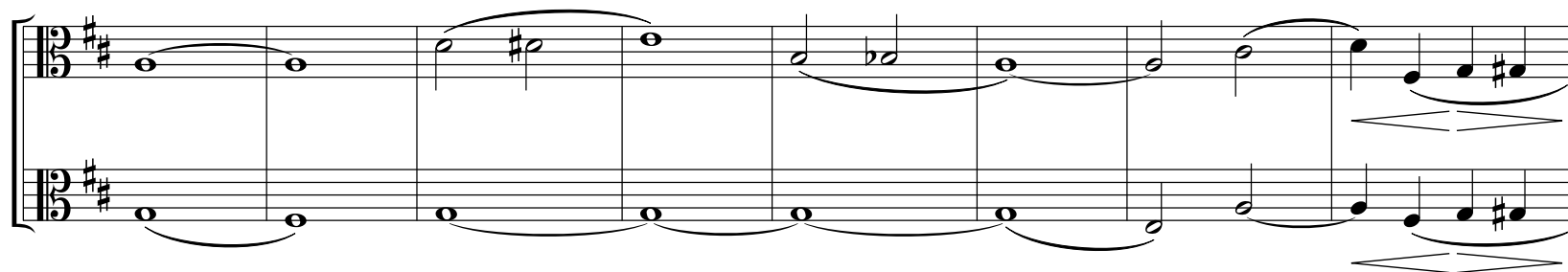
227



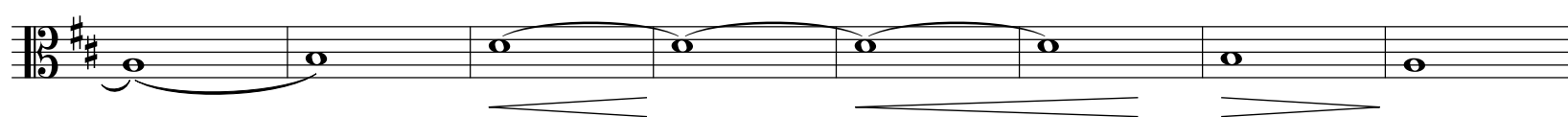
233 Un poco più tranquillo



243



251



259



267

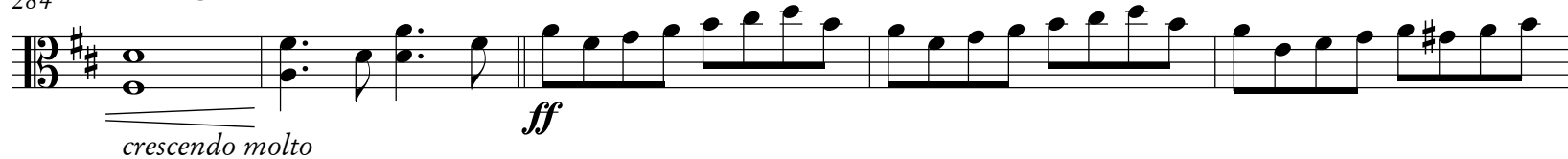


275



284 Stringendo

Allegro marziale e maestoso, come l'introduzione



289



293



297



304 Allegro molto



310



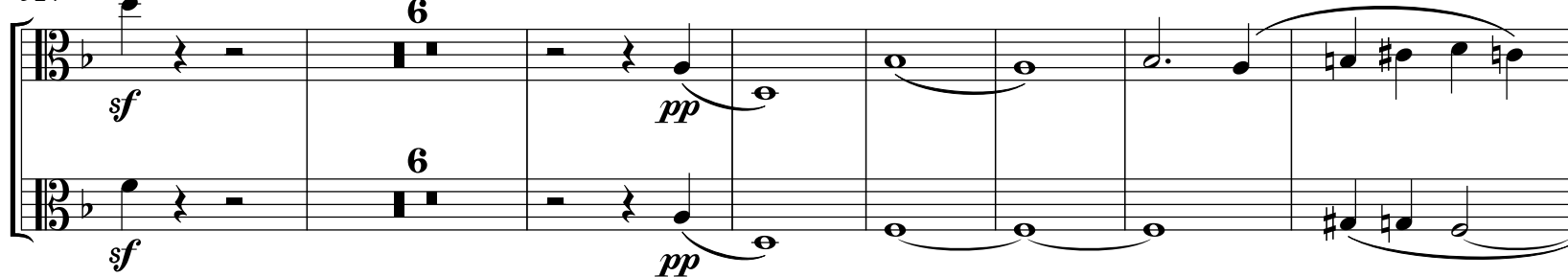
316

String. poco a poco cresc.

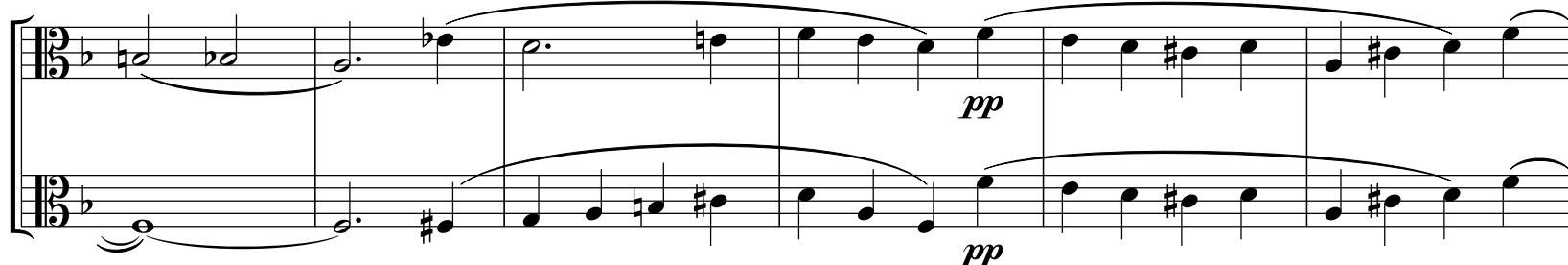


324 Tempo I

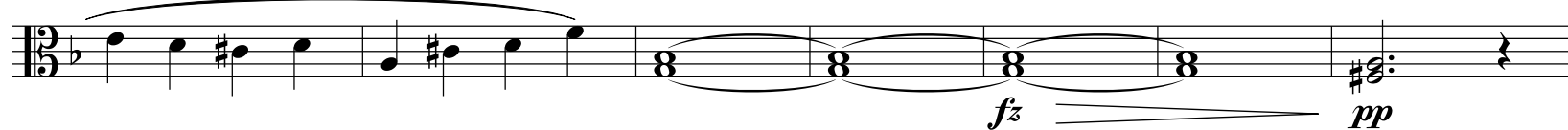
Un poco più tranquillo



337



343



350

