

Oboe I



ANDREAS RANDEL

1806–1864

Uvertyr till Wermländingarne

Overture to Wermländingarne

Ouverture

till sångspelet Wermländingarne

Andreas Randel
(1806-1864)

Andante sostenuto

12 Cl. I

f *f*^{ten.} *dim.* *p*

19 *p dolce*

24 4

33 *rit.* **Andante con moto** *rit.* 4 3 1. 2.

Poco allegretto

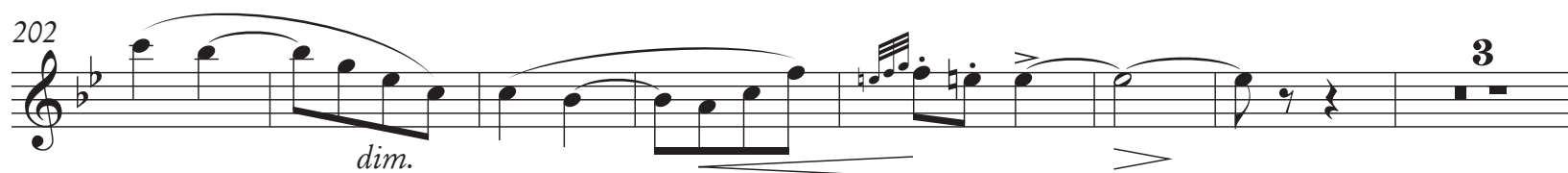
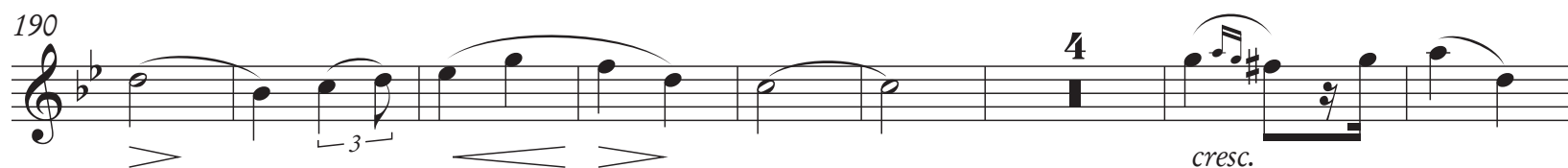
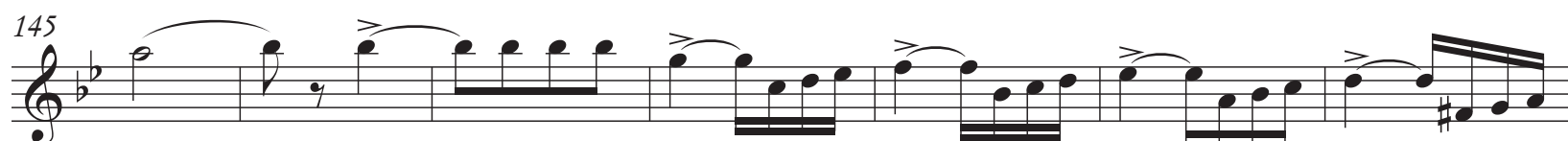
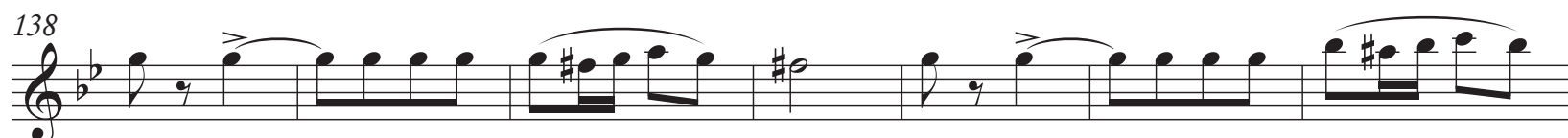
45 13 Fl. I *mf* *p*

65

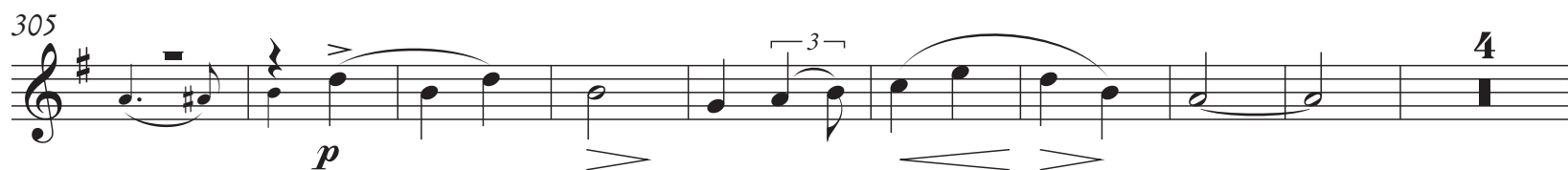
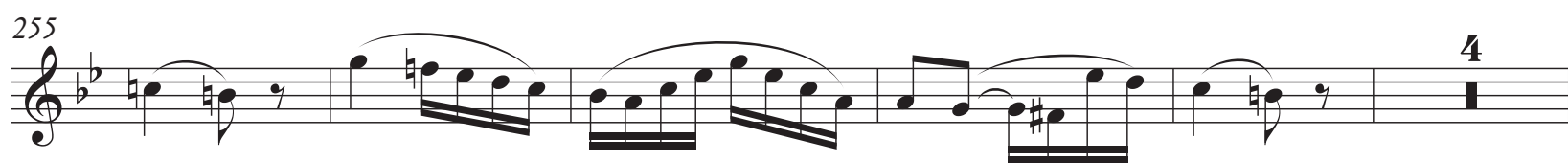
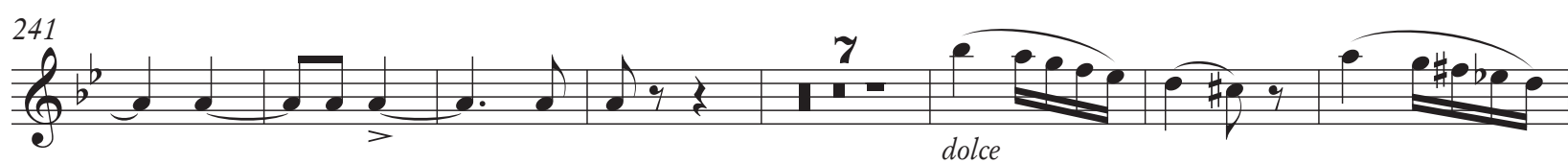
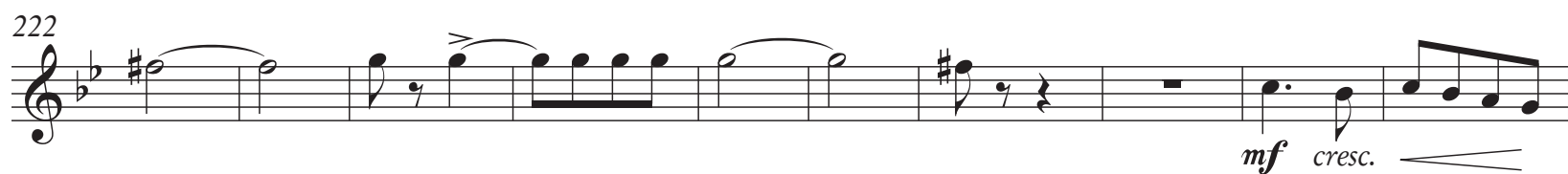
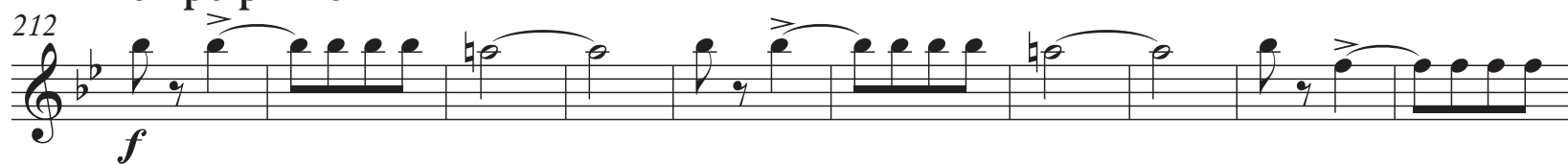
72 **Andantino dim. e rall. Allegro agitato** 9 *f*

88 *mf cresc.* *f* *mf cresc.* *ff*

97 17 Fl. I



Tempo primo



Poco più lento

13

VI. I

325 **Tempo primo**

f *dim.*

337

f *dim.*

347

p *cresc.* *f*

354 **Tempo di Pollacca**

f *f* *p*

365

f

373 **Molto allegro**

f *ff*

382

391